



GAT MONTHLY MEMBERSHIP PROGRESS REPORT

Results as of: 2/28/2021

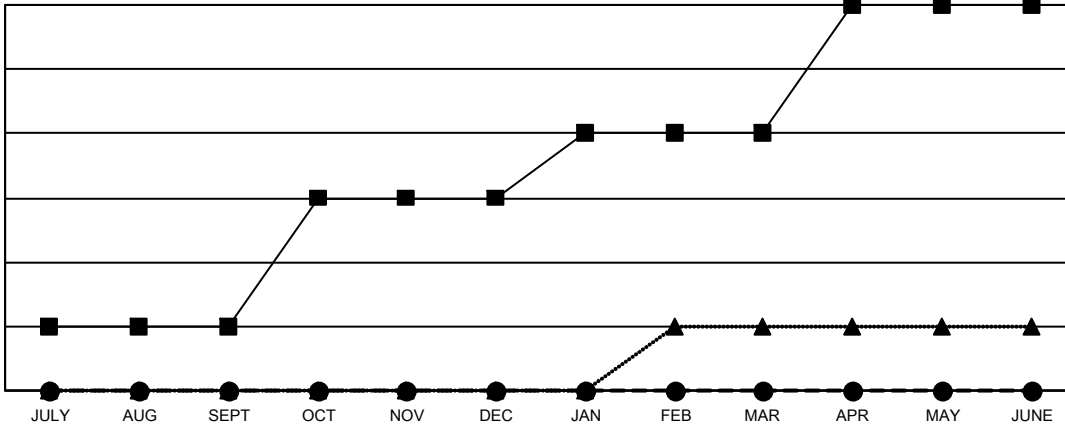
Multiple District 30

LOCATION: MISSISSIPPI

| Clubs | | | |
|-----------------------|---------------|-----------|---------------|
| RESULTS FOR 2020-2021 | | | |
| QUARTER | NEW CLUB GOAL | NEW CLUBS | DROPPED CLUBS |
| JULY/AUG/SEPT | 1 | 0 | 4 |
| OCT/NOV/DEC | 2 | 0 | 0 |
| JAN/FEB/MAR | 1 | 0 | 1 |
| APR/MAY/JUNE | 2 | 0 | 0 |

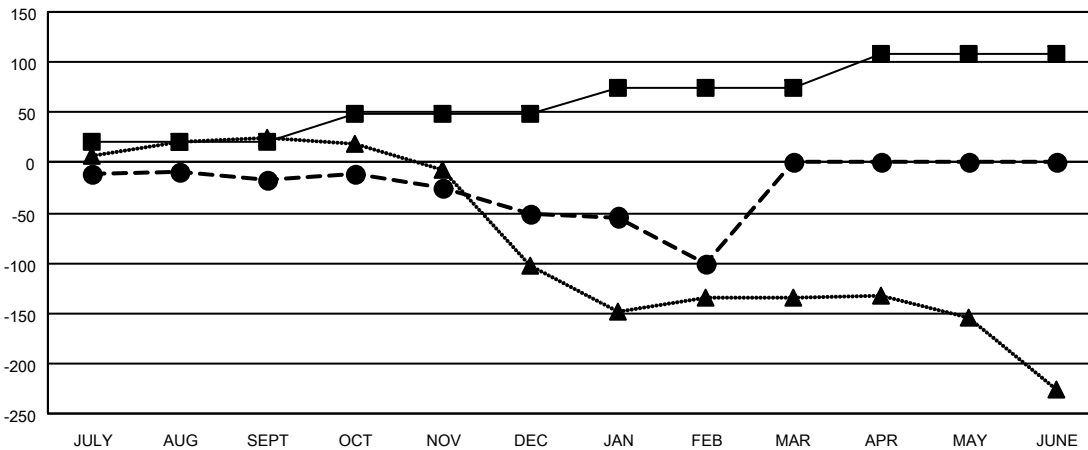
| Members | | | |
|-----------------------|------------------------|----------------------|--|
| RESULTS FOR 2020-2021 | | | |
| QUARTER | MEMBER GROWTH NET GOAL | MEMBER GROWTH ACTUAL | DROPPED MEMBERS ACTUAL (including transfers) |
| JULY/AUG/SEPT | 20 | 33 | 46 |
| OCT/NOV/DEC | 29 | 31 | 63 |
| JAN/FEB/MAR | 25 | 16 | 64 |
| APR/MAY/JUNE | 34 | 0 | 0 |

GOALS AND ACTUAL NEW CLUBS CUMULATIVE



- - CURRENT YEAR GOALS FOR NEW CLUBS
- - CURRENT YEAR ACTUAL NEW CLUBS
- ▲ - LAST YEAR ACTUAL NEW CLUBS

GOALS AND ACTUAL MEMBERS CUMULATIVE



- - MEMBER GROWTH NET GOAL
- - MEMBER GROWTH ACTUAL
- ▲ - LAST YEAR MEMBERSHIP ACTUAL

| | | |
|------------------------|---|-------------------------------------|
| DROPPED CLUBS: 5 | 34 CLUBS OF 96 ADDED 1 OR MORE NEW MEMBERS | <u>GENDER DISTRIBUTION</u> |
| | | MALE 1,284 (72.79%) |
| | | FEMALE 480 (27.21%) |
| <u>DROPPED MEMBERS</u> | CLICK HERE FOR CUMULATIVE MEMBERSHIP DATA | TOTAL FAMILY UNIT MEMBERS 230 |
| DECEASED 25 | | FAMILY MEMBERS PAYING HALF DUES 116 |
| CLUB CANCELLED 38 | | |
| OTHER 110 | | |
| TOTAL 173 | | |